

# Customer PoC On-boarding Guide for Azure (migration)





Please perform the following steps in order to run migration and disaster recovery for the PoC or, later, in production.

## 1. Prepare for a deployment

- Create a security group allowing the following traffic:
  - Hystax Acura host:
    - Ingress – tcp/443
    - Ingress – tcp/4443
    - Ingress – udp/12201
  - Hystax Cloud Agent (spawned automatically in the Target Project)
    - Ingress – tcp/80
    - Ingress – tcp/3260
    - Ingress – tcp/15000
- Prepare networks in advance to be used by Hystax Acura

## 2. Deploy Hystax Acura

Set your cloud using the following steps:

1. Go to “Disks” and create a Disk using the Blob uploaded by Hystax Team
  - The region for the disk should be the same as Storage Account region (you won’t see Blob otherwise)
  - The OS should be set to “Linux”
  - Disk size should be at least 100 GB
  - Disk type should be “Premium SSD”



[Home](#) > [Disks](#) > Create managed disk

## Create managed disk

[Basics](#) [Tags](#) [Review + create](#)

Select the disk type and size needed for your workload. Azure Disks are designed for 99.999% availability. Azure Managed Disks encrypt your data at rest, by default, using Storage Service Encryption. [Learn more about disks.](#)

### Project details

Select the subscription to manage deployed resources and costs. Use resource groups like folders to organize and manage all your resources.

\* Subscription

\* Resource group    
[Create new](#)

### Disk details

\* Disk name

\* Region

Availability zone

Source type

Source subscription

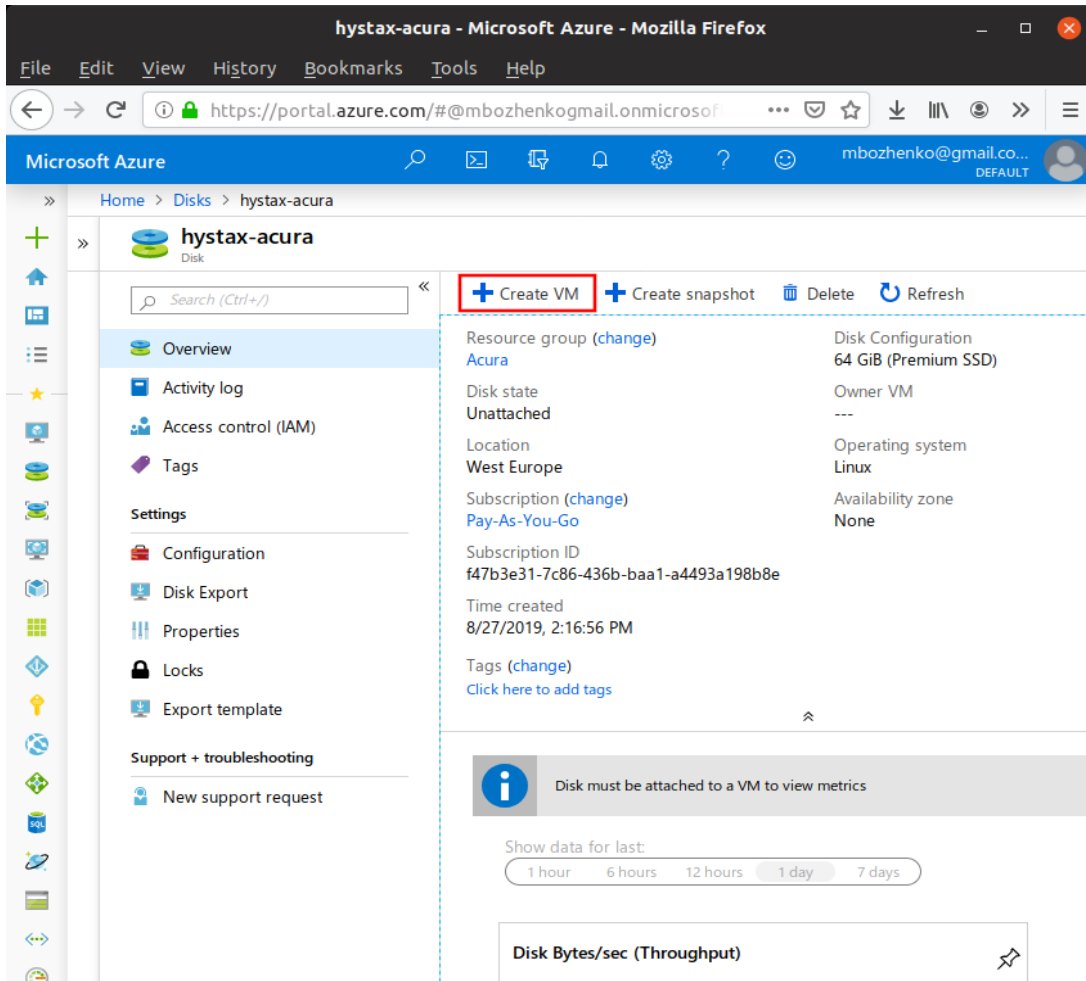
\* Source blob    
[Browse](#)

OS type

\* Size   
Premium SSD  
[Change size](#)

## 2. Create a VM using the created Disk

Find the created Disk in Disks, click on it and press “Create VM”

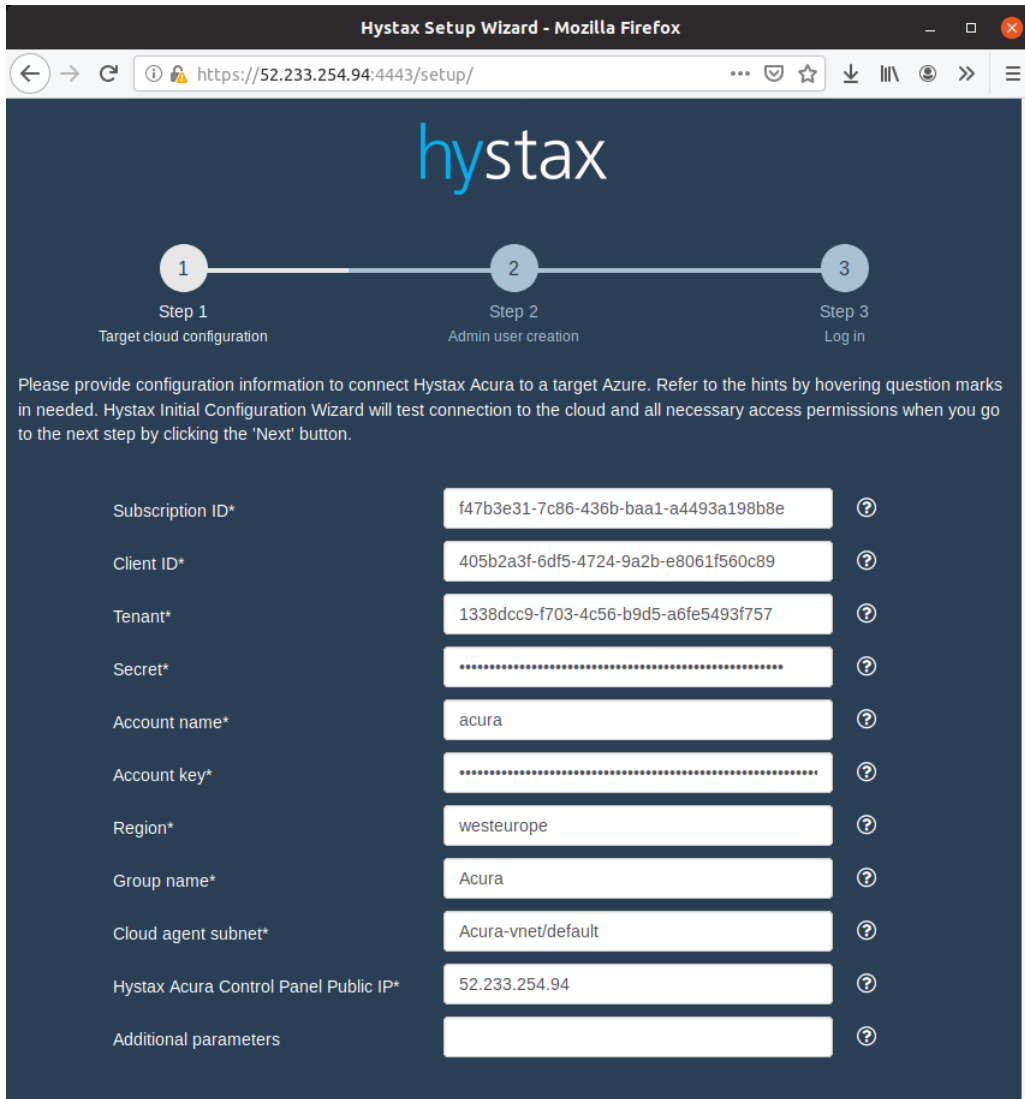


### Required settings for VM:

- At least 4 CPU and 16GB RAM - Standard\_D4s\_v3 VM type.
- Static Public IP
- The following inbound network ports must be opened:
  - 80, 443, 4443 TCP
  - 12201 UDP

### 3. Pass Acura Initial Configuration

Once the VM is started, wait approximately 20 minutes for it to boot up, then open its public IP in a web browser. Please accept the certificate warnings and then you will see the initial configuration page:



Please consult the following manual on how to create an Application Account and obtain “Application (Client) ID”, “Tenant”, “Secret”. The Application Account for Acura should have the “Contributor” role assigned.

Please find the instruction to go through the initial configuration below:

<https://hystax.com/wp-content/uploads/2019/08/Hystax-Acura-Installation-Guide-Azure.pdf>



### 3. Getting started with Hystax Acura

After you go through the initial configuration you will be taken to the page, on which you need to enter a login and a password for the user created during initial configuration. After that you will be taken to the customer page.

Please read this document [Step-by-Step Guide](#), describing the full flow - from machine protection and to its recovery and failback in case of disaster or use the detailed description by each point below.

### 4. Download and install a replication agent

Please read the instructions below, download the agent for the respectful operating system and install it.

[Download and install replications agents](#)

### 5. Proceed with replication

Once the replication agent is installed, the machine can actually be migrated:

[Replication new machines](#)

### 6. Create migration plans

Choose one machine or several machines for which you need to generate a migration plan. Specify the necessary settings when creating the migration plan. You can use the instructions below for this:

[Create a migration plan](#)

### 7. Running a failover

The failover is customer business application running in the backup DC which consists of network infrastructure, components included into business application. You can use the instructions below for this:

[Create a failover](#)

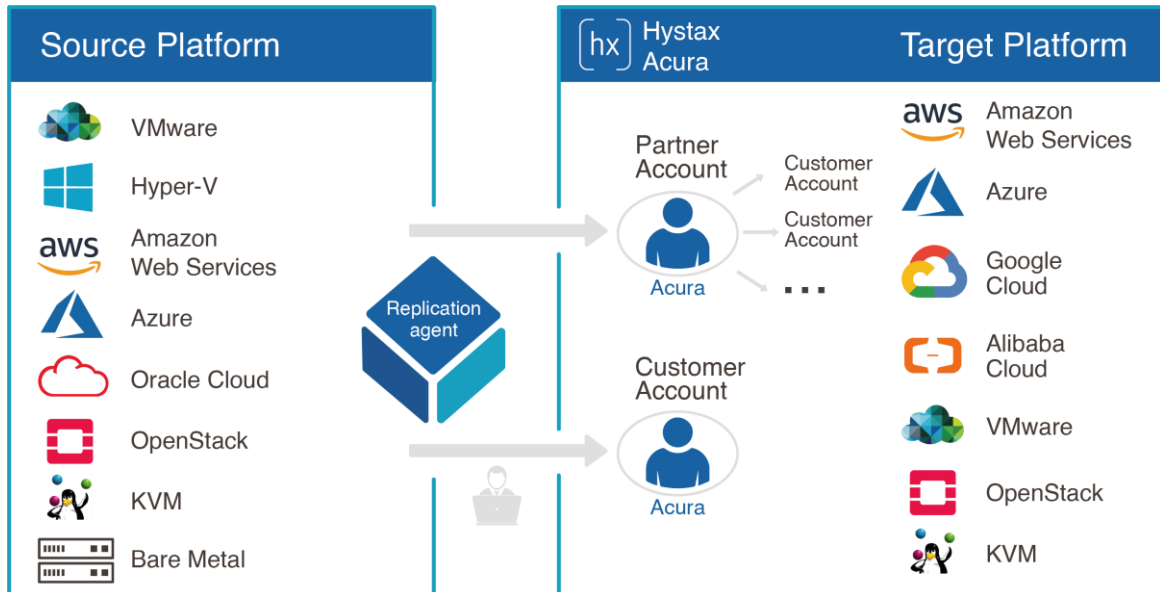
### 8. Cutover

Select the failover and click on the 'Detach' button, after that failover will be deleted and the migrated machine will remain in your cloud.

### 9. Video instruction:

[Hystax Acura Migration: End-to-End demo \(Azure\)](#)

## 10. Supported clouds and platforms



### Useful links:

[Knowledge Base Topics](#)

[Support portal](#)

[Documentation for Live Migration](#)

[Contacts](#)